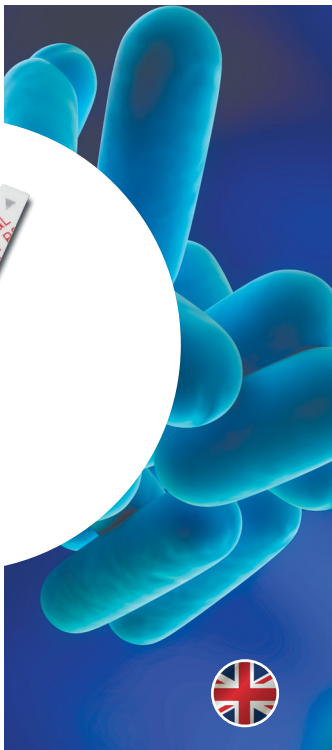
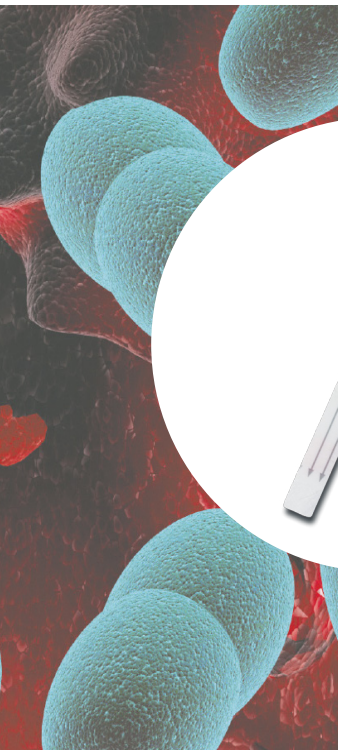


IMMUVIEW®

S. PNEUMONIAE AND L. PNEUMOPHILA
URINARY ANTIGEN TEST

ENGLISH

SSI Diagnostica



Para otras lenguas
Para outras linguas
Für andere Sprachen
Pour d'autres langues
Per le altre lingue

For andre språk
Для других языках
För andra språk
Muiden kilten
For andre sprog



www.ssidiagnostica.com

Go to www.ssidiagnostica.com to download the package insert in the above languages. Contact us if you wish to be sent a printed version or a digital version via email or fax.

@ ssidiagnostica@ssidiagnostica.com, T +45 4829 9178

IMMUIVIEW® *S. PNEUMONIAE* AND *L. PNEUMOPHILA* URINARY ANTIGEN TEST

For *in vitro* diagnostic use

Application

The ImmuView® *S. pneumoniae* and *L. pneumophila* Urinary Antigen Test is intended for diagnosis of *Streptococcus pneumoniae* and *Legionella pneumophila* infections by detection of urinary antigens for either or both *S. pneumoniae* and *L. pneumophila* serogroup 1. The test is a lateral flow test also known as a lateral flow immunochromatographic assay.

Description

ImmuView® *S. pneumoniae* and *L. pneumophila* Urinary Antigen Test is a rapid lateral flow test for qualitative detection of *S. pneumoniae* and *L. pneumophila* serogroup 1 antigens in human urine samples.

The test is effective in presumptive diagnosis of pneumococcal pneumonia caused by *S. pneumoniae* or *Legionella pneumonia* (Legionnaires' Disease) caused by *L. pneumophila* serogroup 1, in conjunction with culture and other methods.

Correct and early treatment is vital for the prognosis of both diseases and therefore quick methods to confirm both diseases in the initial phase are very important in order to initiate the proper antibiotic treatment as soon as possible.

Principle

ImmuView® *S. pneumoniae* and *L. pneumophila* Urinary Antigen Test is a rapid lateral flow test for detection of *S. pneumoniae* and *L. pneumophila* using the same test.

Limitations

- ImmuView® *S. pneumoniae* and *L. pneumophila* Urinary Antigen Test has not been validated to use with urine samples from children under 7 years.
- ImmuView® *S. pneumoniae* and *L. pneumophila* Urinary Antigen Test has been validated using urine specimens only. Other specimens (e.g. serum or other body fluids) that may contain antigen have not been validated.
- ImmuView® *S. pneumoniae* and *L. pneumophila* Urinary Antigen Test is not yet validated on Cerebral Spinal Fluid (CSF). Preliminary results from an ongoing study suggests that the test is able to be used on CSF.
- The diagnosis of an *S. pneumoniae* or *L. pneumophila* infection cannot be based on clinical or radiological evidence alone.
- A negative result does not exclude a *Legionella* infection, as it can be caused by other serogroups and *Legionella* species. There is no single satisfactory laboratory test for Legionnaires' Disease. Therefore, culture results, PCR, serology and/or antigen detection methods should be used

in conjunction with clinical findings to make an accurate diagnosis

- A negative result does not exclude an *S. pneumoniae* infection. The result of this test as well as culture, serology or other antigen detection methods should be used in conjunction with clinical findings to make an accurate diagnosis.
- *S. pneumoniae* vaccine may cause false positive results in urine in ImmuView® *S. pneumoniae* and *L. pneumophila* Urinary Antigen test up to 6 days after vaccination.
- Reading test results before or after 15 minutes may give incorrect results.
- The test is not intended to replace PCR or culture.

Materials Provided

- 1 tube with 22 test strips
- 0.5 mL combined positive control for *S. pneumoniae* and *L. pneumophila*
- 0.5 mL combined negative control for *S. pneumoniae* and *L. pneumophila*
- 2.5 mL running buffer
- 1 tweezer
- 22 transfer pipettes
- 22 test tubes
- 1 cardboard test tube holder

Quick guide can be found on inside of box and on page 8.

Materials Required but not Provided

Timer. Sterile standard urine collection containers/transport tubes.

Sample Collection

Collect urine sample in sterile standard container (with or without boric acid as preservatives). If the sample is run within 24 hours it can be stored at room temperature. Alternatively, the sample can be stored at 2-8°C for 1 week or frozen (-20°) for 2 weeks. Make sure that samples always reach room temperature before testing.

Procedure

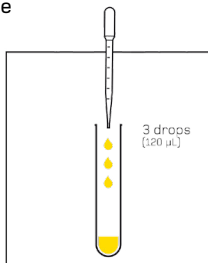
The positive and negative controls should follow the same procedure as if it was a urine sample. The positive control should be visible at the control test line and the *S. pneumoniae* and *L. pneumophila* test line. The negative control should only be visible at the control line.

1. Bring the patient urine sample to room temperature. Whirl thoroughly prior to testing.
2. Apply a test tube in the cardboard holder.
3. Fill the transfer pipette with urine and add **3 drops (120 μ L)** of sample to the test tube (hold the pipette vertically). *
4. Add **2 drops (90 μ L)** of running buffer to the test tube (hold the buffer bottle vertically).
5. Whirl the test tube gently.
6. Take the "Test" container, open it and take out the number of test strips needed, and close it firmly afterwards.
7. Insert the test strip into the test tube.
8. Wait 15 minutes.
9. Lift the test strip out of the test tube. Read the result within **5 minutes**. **
10. Discard the test strip after interpretation of the result.

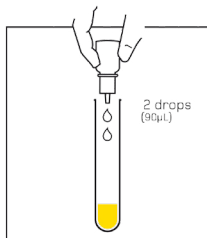
* If the urine sample contains visible blood, please confirm a positive result by boiling the sample for 10 minutes.

** Otherwise the test result may be inaccurate.

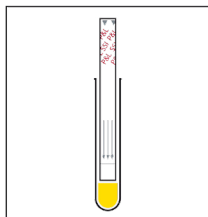
Quick guide



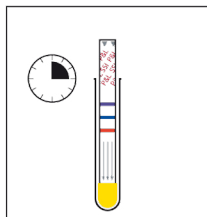
Sample addition



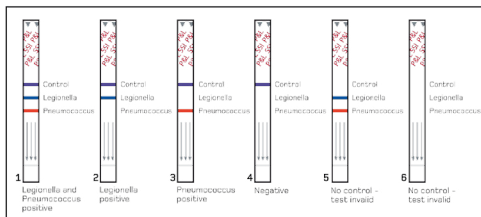
Add running buffer vertically
and whirl gently



Add test



15 minutes



Results

Interpretation of results

The Control test line in the top will appear purple/grey, but can also be more blue or red depending on whether the sample is positive for either *S. pneumoniae* or *L. pneumophila* serogroup 1. Only a full line indicates a positive result - dots do not indicate a positive result.

A **positive sample for both *Legionella* and *Pneumococcus*** will show a pink/red line in the bottom half of the test for Pneumococcus positive followed by a blue line in the middle for *L. pneumophila* serogroup 1 positive, and at the top of the test a purple/grey Control line will appear (see test number 1).

A **positive sample for *Legionella*** will show a blue line for *L. pneumophila* serogroup 1 positive, and at the top of the test a purple/grey Control line will appear (see test number 2).

A **positive sample for *Pneumococcus*** will show a pink/red line for Pneumococcus positive, and at the top of the test a purple/grey Control line will appear (see test number 3).

A **negative sample** will show a single purple/grey Control line in the top of the test (see test number 4). A negative result does not exclude an *S. pneumoniae* or *Legionella* infection, see limitations.

Note: Three grey/purple test lines do not indicate a positive result.

If three grey lines are observed the result can be confirmed by

boiling the urine sample for approx. 10 minutes. Boiling can also be used for confirmation of a positive result as *Legionella* and Pneumococcus antigens are heat stable. Remember to let the urine sample cool down to room temperature before retesting the sample.

If no Control line is observed the test is **invalid** and the sample should be retested (see test number 5 and 6).

Clinical Sensitivity and Specificity

The clinical sensitivity of the *S. pneumoniae* test line was obtained by testing retrospective urine samples from patients with a blood culture positive sample for *S. pneumoniae*.

The clinical sensitivity of the *L. pneumophila* test line was obtained by testing retrospective urine samples from patients with a confirmed Legionnaires' Disease.

The clinical specificity of the *S. pneumoniae* and *L. pneumophila* test lines was obtained by testing urine samples from patients with urinary tract infections and blood culture negative samples. Furthermore, no cross-reaction between *S. pneumoniae* and *L. pneumophila* serogroup 1 urine samples was detected.

S. pneumoniae

	ImmuView® <i>S. pneumoniae</i> and <i>L. pneumophila</i> Urinary Antigen Test	Commercial Rapid Test
Sensitivity (n=71) ¹	85%	78%
Specificity (n=76)	99%	

L. pneumophila

	ImmuView® <i>S. pneumoniae</i> and <i>L. pneumophila</i> Urinary Antigen Test	Commercial Rapid Test
Sensitivity (n=99) ¹	89%	54%* (72%)
Specificity (n=76)	100%	

S. pneumoniae and *L. pneumophila* combined

	ImmuView® <i>S. pneumoniae</i> and <i>L. pneumophila</i> Urinary Antigen Test	Combination of two Commercial Rapid tests for <i>S. pneumoniae</i> and <i>L. pneumophila</i>
Sensitivity (n=170) ¹	87%	64%* (74%)
Specificity (n=76)	99%	

* Sensitivity when very faint/weak test lines are scored negative.

Analytical Sensitivity and Specificity

To determine the analytical sensitivity and specificity of the ImmuView® *S. pneumoniae* and *L. pneumophila* Urinary Antigen Test a panel of the 92 *S. pneumoniae* serotypes, the 8 subgroups of *L. pneumophila* serogroup 1, 16 *L. pneumophila* non-serogroup 1, 4 *Legionella* species, and a panel of 116 potential cross-reactants were tested. No cross-reactions were detected.

The panel of 116 potential cross-reactants was spiked in negative urine at a concentration of 10^7 CFU/mL.

<i>Acinetobacter</i> (4)	<i>Lacto. catenaforme</i>	<i>S. mutans</i>
<i>Bacillus subtilis</i>	<i>Lacto. rhamnosus</i>	<i>S. parasanquis</i>
<i>Bordetella pertussis</i>	<i>Listeria monocytogenes</i>	<i>S. sanquis</i>
<i>Branhamella catarrhalis</i>	<i>M. morgani</i>	<i>S. saprophyticus</i>
<i>Candida albicans</i> (4)	<i>Moraxella alsoensis</i>	<i>S. thomson</i>
<i>C. aquaticum</i> (2)	<i>N. cineria</i>	<i>S. typhimurium</i>
<i>Corynebacterium sp.</i>	<i>N. gonorrhoeae</i> (3)	<i>Serratia marcescens</i>
<i>E. cloacea</i> (4)	<i>N. lactamica</i>	<i>Staph. aureus</i> (6)
<i>E. coli</i> (10)	<i>N. meningitidis</i>	<i>Staph. epidermidis</i> (5)
<i>E. faecalis</i> (5)	<i>N. polysak</i>	<i>Staph. saprophyticus</i>
<i>E. faecium</i>	<i>P. mirabilis</i> (2)	<i>Steno. maltophilia</i>
<i>Enterococcus durans</i>	<i>P. vulgaris</i> (2)	<i>Streptococcus group A</i> (2)
<i>G. vaginalis</i>	<i>Pseudomonas</i> (2)	<i>Streptococcus group B</i> (10)
<i>H. influenzae</i> (11)	<i>Ps. aeruginosa</i> (4)	<i>Streptococcus group C</i>
<i>H. parainfluenzae</i>	<i>Ps. stutzeri</i>	<i>Streptococcus group F</i>
<i>K. oxytoca</i> (2)	<i>S. bredeney</i>	<i>Streptococcus group G</i>
<i>K. pneumoniae</i> (3)	<i>S. epidermidis</i>	<i>Streptococcus group L</i>
<i>Lactobacillus</i>	<i>S. glostrup</i>	

The analytical test performance is:

Sensitivity (n = 100) 100 %

Specificity (n = 116) 100 %

Storage and Shelf Life

Store at room temperature. Expiry date is printed on the package.

Quality Certificate

SSI Diagnostica's development, production and sales of *in vitro* diagnostics are quality assured and certified in accordance with ISO 9001 and ISO 13485.



REF 95389

References

1. Jørgensen, Uldum, Sørensen, Skovsted, Otte, Elverdal. (2015) "Evaluation of a new lateral flow test for detection of *Streptococcus pneumoniae* and *Legionella pneumophila* urinary antigen." J Microbiol Methods. 116 (2015): 33-36.

Information and Ordering

SSI Diagnostica
2 Herredsvejen
DK-3400 Hillerød
Denmark

T +45 4829 9178

F +45 4829 9179

@ ssidiagnostica@ssidiagnostica.com

W ssidiagnostica.com

🛒 shop.ssidiagnostica.com

SSI Diagnostica
2 Herredsvejen
3400 Hillerød
Denmark

T +45 4829 9178
F +45 4829 9179
@ ssidiagnostica@ssidiagnostica.com
W ssidiagnostica.com

SSI Diagnostica • 6th Edition • September 2016 • 95603