

## DATA SHEET

### Anti human C4d Antibody (C4dpAb)

Cat. no.: BI- RC4D

**Source:** rabbit polyclonal

**Quantity:** 250 µl/vial

**Form:** liquid IgG fraction, purified by protein G chromatography

**Immunogen:** synthetic peptide (15-mer peptide corresponding to aa 1242-1256 of C4) specific for human complement split product C4d coupled to KLH (keyhole limpet haemocyanine).

**Specificity:** The antibody will identify human complement split product C4d

**Application:** The antibody has been tested for use on paraffin sections and frozen sections of human tissue. Working protocol available.  
Recommended dilution for immunohistochemistry: 1:30 – 1:50  
Pretreatment of slides by pressure cooking (5 minutes at +125°C in TRIS/EDTA buffer pH 8.5) is highly recommended for antigen retrieval.

**Stability:** Storage and transport temperature: +4°C.  
The antibody is stable at +4°C up to the expiry date.

**Shelf life:** Expiry date is stated on the label.

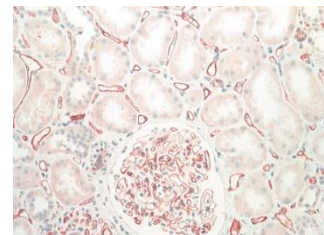
#### Literature:

1. Regele H et al. "Endothelial C4d deposition is associated with inferior kidney allograft outcome independently of cellular rejection". Nephrol Dial Transplant 2001, 16:2058-66

2. Böhmig GA et al. C4d-positive acute humoral renal allograft rejection: effective treatment by immunoabsorption. J Am Soc Nephrol, 2001 Nov;12(11):2482-9

3. Böhmig GA et al. Capillary C4d deposition in kidney allografts: a specific marker of alloantibody-dependent graft injury. J Am Soc Nephrol. 2002 Apr;13(4):1091-9.

4. Regele H et al. „Capillary deposition of complement split product C4d in renal allografts is associated with basement membrane injury in peritubular and glomerular capillaries: a contribution of humoral immunity to chronic allograft rejection". J Am Soc Nephrol. 2002, 13:2371-80



rev.no: 120229 (replacing 100705)



BIOMEDICA



Biomedica Medizinprodukte GmbH & Co KG, A-1210 Wien, Divischgasse 4  
Tel. +43/1/291 07 45, Fax +43/1/291 07 85, E-mail export@bmgrp.at

## FICHA TECNICA

### Anticuerpo anti C4d humano (C4dpAb)

Referencia: BI- RC4D

**Huesped:** polyclonal de conejo

**Cantidad:** 250 µl/vial

**Present.:** Fracción IgG líquida IgG, purificada por cromatografía de proteína G.

**Inmunógeno:** peptide sintético (15-mer correspondiente a los aa 1242-1256 de C4) específico para el producto del complemento humano procedente de la escisión C4d acoplado a KLH (keyhole limpet haemocyanine).

**Especificidad:** El anticuerpo reconoce el producto del complemento C4d procedente de la escisión.

**Aplicación:** El anticuerpo ha sido testado para su utilización en secciones de tejido humano incluido en parafina y en secciones de tejido humano en congelación. sections of human tissue. Existe un protocolo de trabajo disponible. Dilución recomendada para inmunohistoquímica: 1:30 – 1:50 Para la recuperación antigénica, se recomienda realizar un pretratamiento de los portas con olla a presión (10 min a presión de 1 bar, en tampón citrato 10mM pH 6.0).

**Estabilidad:** Temperatura de almacenaje y transporte: + 4°C  
El anticuerpo es estable a 4°C hasta la fecha de caducidad.

**Vida media:** La fecha de caducidad se indica en la etiqueta del producto.

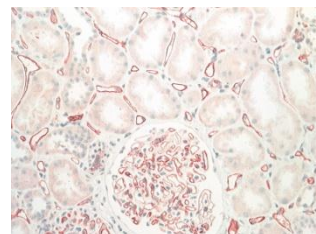
#### Literature:

1. Regele H et al. "Endothelial C4d deposition is associated with inferior kidney allograft outcome independently of cellular rejection". Nephrol Dial Transplant 2001, 16:2058-66

2. Böhmig GA et al. C4d-positive acute humoral renal allograft rejection: effective treatment by immunoadsorption. J Am Soc Nephrol, 2001 Nov;12(11):2482-9

3. Böhmig GA et al. Capillary C4d deposition in kidney allografts: a specific marker of alloantibody-dependent graft injury. J Am Soc Nephrol. 2002 Apr;13(4):1091-9.

4. Regele H et al. „Capillary deposition of complement split product C4d in renal allografts is associated with basement membrane injury in peritubular and glomerular capillaries: a contribution of humoral immunity to chronic allograft rejection". J Am Soc Nephrol. 2002, 13:2371-80



rev.no: 120229 (replacing 100705)

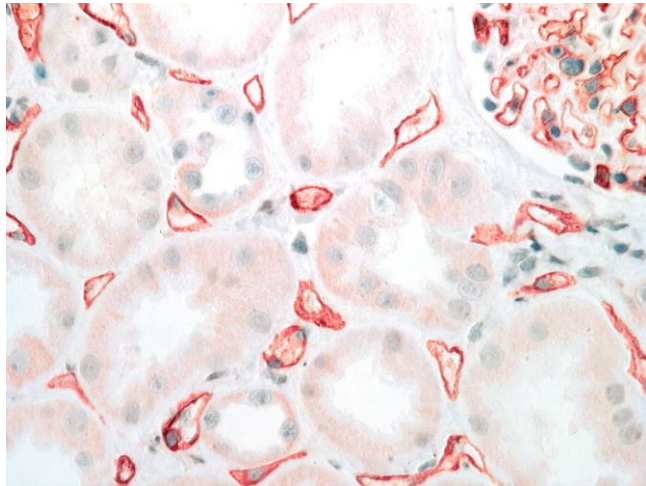


BIOMEDICA

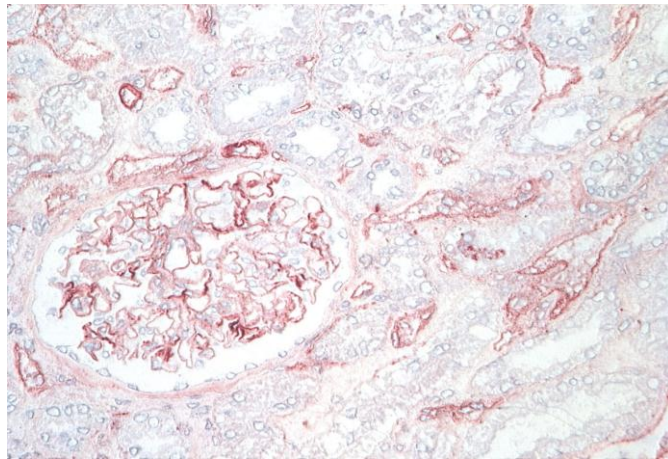


Biomedica Medizinprodukte GmbH & Co KG, A-1210 Wien, Divischgasse 4  
Tel. +43/1/291 07 45, Fax +43/1/291 07 85, E-mail export@bmgrp.at

## Microphotographs of Anti human C4d Antibody (C4dpAb)

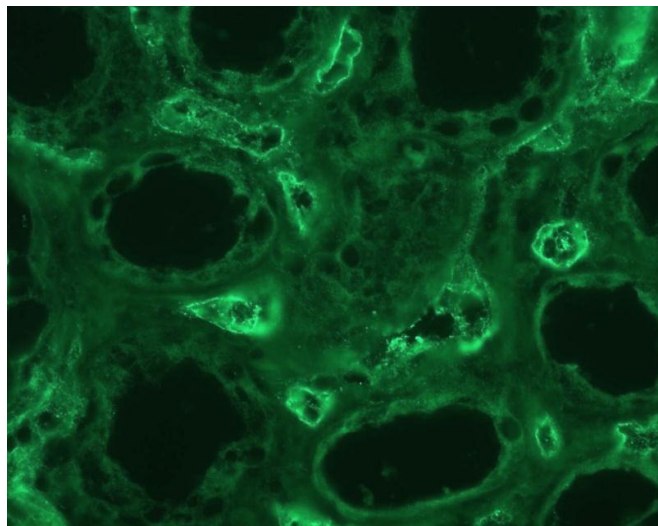


paraffin embedded tissue sections



Cryosections

## Immunofluorescence Microphotographs of Anti human C4d Antibody (C4dpAb)



Dilution 1:20

rev.no: 120229 (replacing 100705)



BIOMEDICA